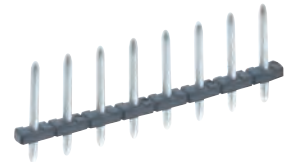
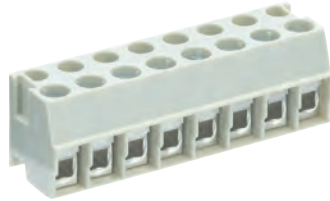


# PCB screw terminal series 8142, two part PCB terminal wire guard clamp

pitch 5.00 mm

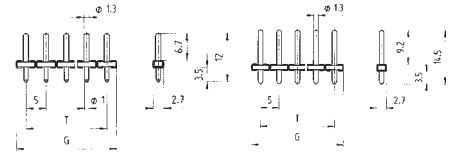
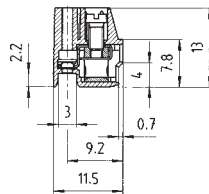
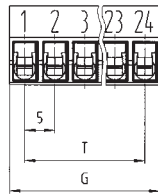
IEC	200 V 4kV cat.3	8 A	0.14 - 2.5 mm <sup>2</sup> (Stranded)
	250 V 4kV cat.2		0.14 - 4.0 mm <sup>2</sup> (Solid)
	1000 V 4kV cat.1		
UL	300 V	15 A	22 -12 AWG
CSA	300 V	15 A	22 -12 AWG

Solder Pin	1.0 x 1.0 mm
Drill Hole	1.3 mm
Wire Strip Length	5 mm
Screw Size	M2.5



See Technical Data section for screw material options

Approvals:



## series 8142 OB pitch 5.00 mm

Box Qty	G	T	Pole
100	10	5	2
100	15	10	3
50	20	15	4
50	25	20	5
50	30	25	6
50	35	30	7
50	40	35	8
50	45	40	9
50	50	45	10
50	55	50	11
50	60	55	12
50	65	60	13
50	70	65	14
50	75	70	15
50	80	75	16

unmarked	marked	Grey pin Ø 1.0 mm	Black pin Ø 1.3 mm
Part Number	Part Number	Part Number	Part Number
25.602.2253.0	25.600.2253.0	Z5.530.0225.0	Z5.530.3225.0
25.602.2353.0	25.600.2353.0	Z5.530.0325.0	Z5.530.3325.0
25.602.2453.0	25.600.2453.0	Z5.530.0425.0	Z5.530.3425.0
25.602.2553.0	25.600.2553.0	Z5.530.0525.0	Z5.530.3525.0
25.602.2653.0	25.600.2653.0	Z5.530.0625.0	Z5.530.3625.0
25.602.2753.0	25.600.2753.0	Z5.530.0725.0	Z5.530.3725.0
25.602.2853.0	25.600.2853.0	Z5.530.0825.0	Z5.530.3825.0
25.602.2953.0	25.600.2953.0	Z5.530.0925.0	Z5.530.3925.0
25.602.3053.0	25.600.3053.0	Z5.530.1025.0	Z5.530.4025.0
25.602.3153.0	25.600.3153.0	Z5.530.1125.0	Z5.530.4125.0
25.602.3253.0	25.600.3253.0	Z5.530.1225.0	Z5.530.4225.0
25.602.3353.0	25.600.3353.0	Z5.530.1325.0	Z5.530.4325.0
25.602.3453.0	25.600.3453.0	Z5.530.1425.0	Z5.530.4425.0
25.602.3553.0	25.600.3553.0	Z5.530.1525.0	Z5.530.4525.0
25.602.3653.0	25.600.3653.0	Z5.530.1625.0	Z5.530.4625.0

Box Qty	G	T	Pole	Part Number	Part Number	Part Number	Part Number

Custom Marking Available  
More poles available on request